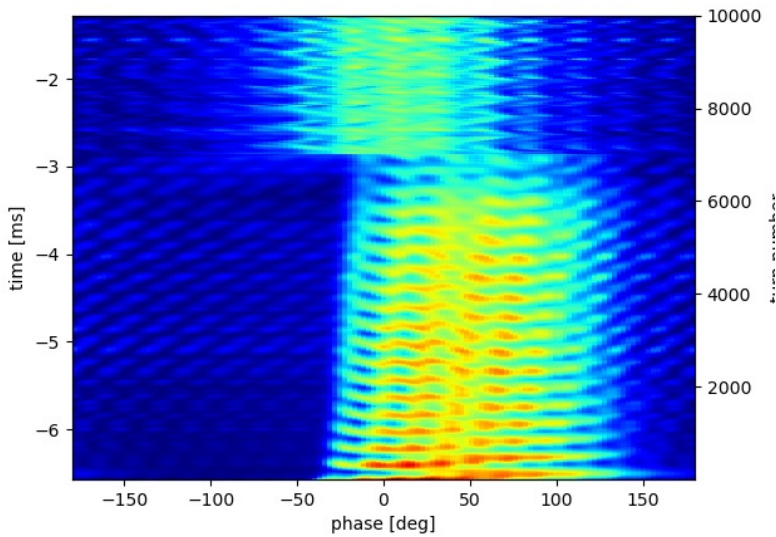


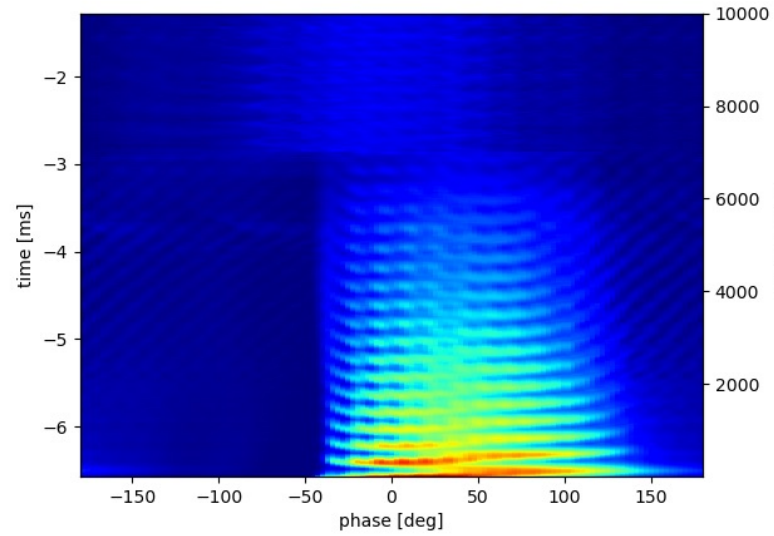
# Tomography with BPM

David Kelliher, 27/1/2022

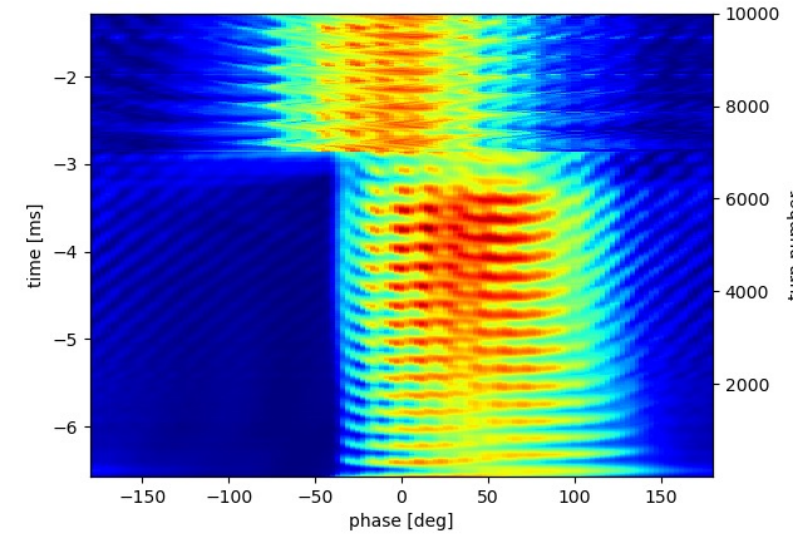
# Bunch monitor and BPM data



Bunch Monitor



BPM (EH1)



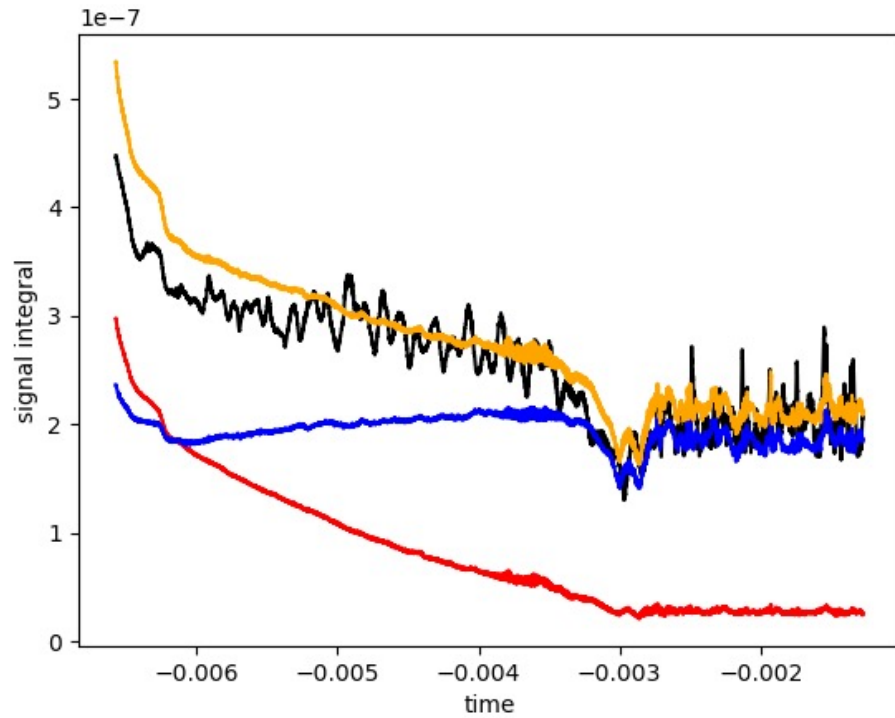
BPM (EH2)

Data taken 18/11/2022.

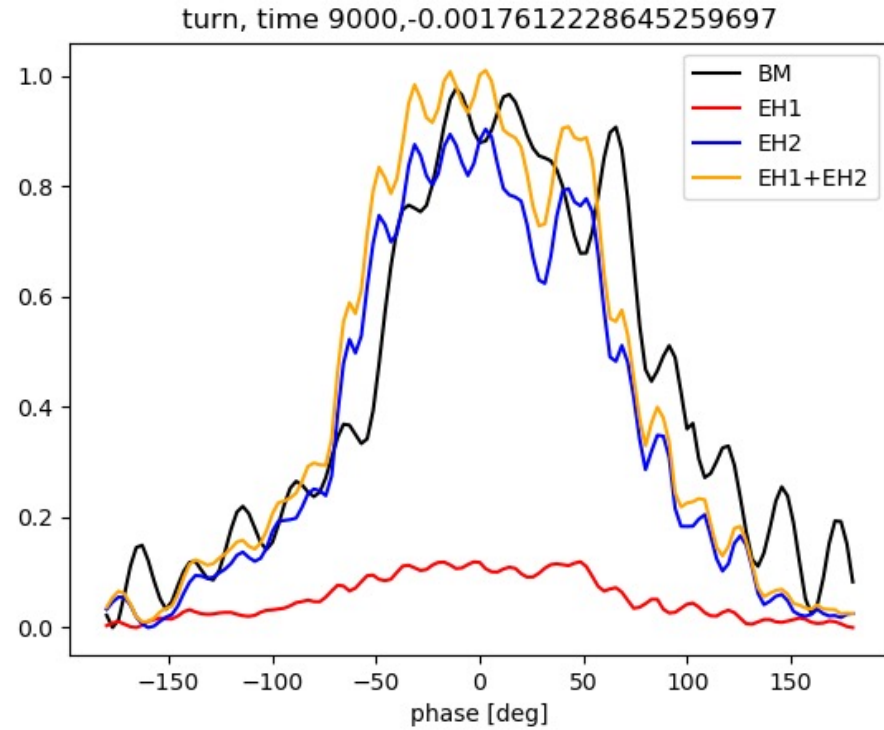
File number 14.

Acceleration to 20.3 MeV inferred from RF frequency.

# Data comparison

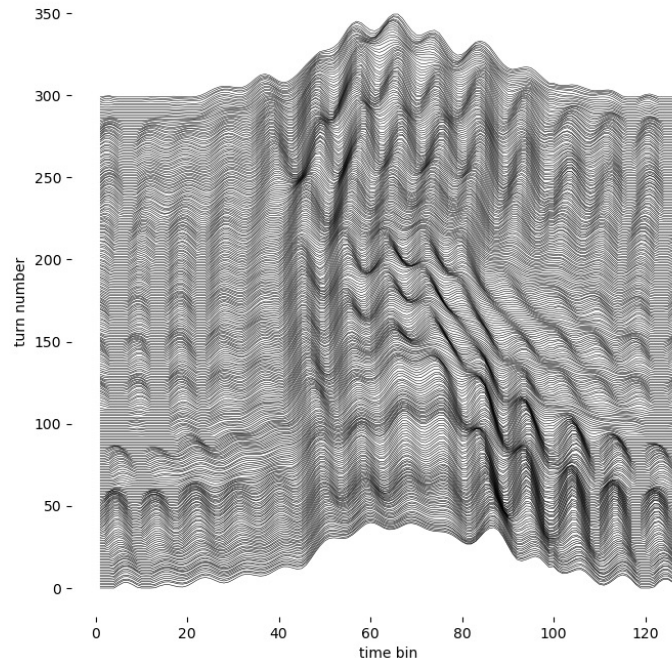


Black: BM  
Red: EH1  
Blue: EH2  
Orange: EH1 + EH2

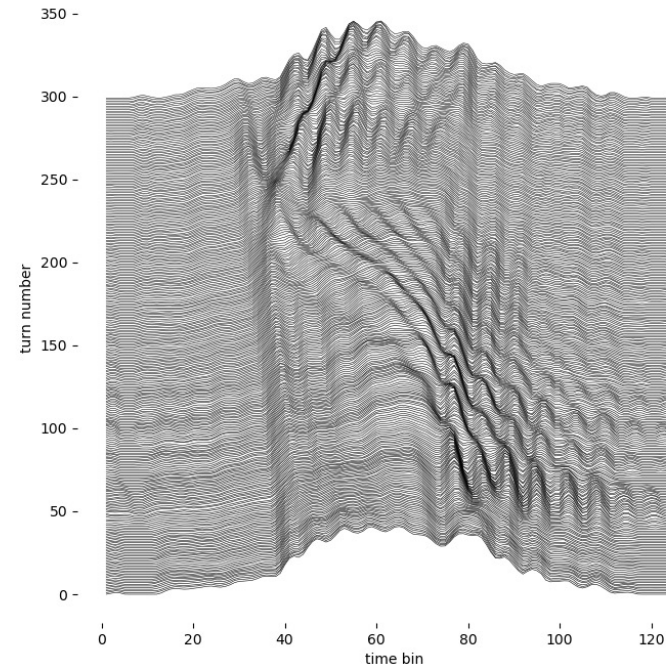


Data compared at turn 9000

# Data selected for tomography



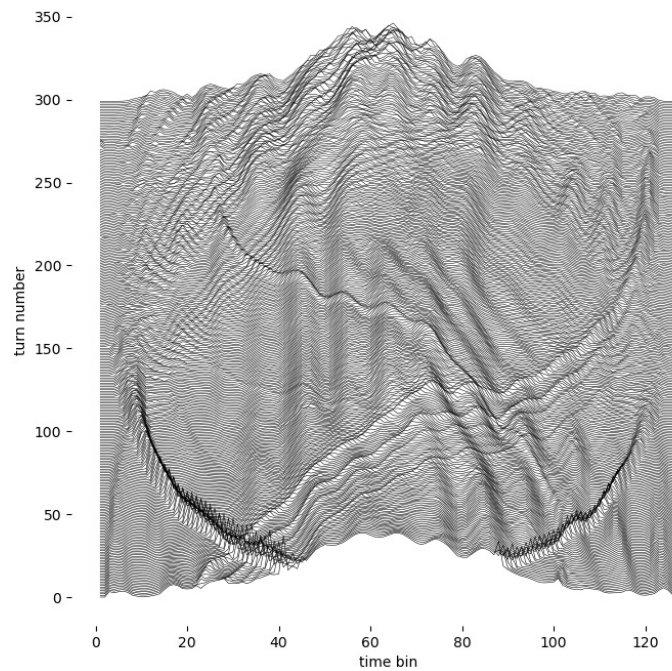
Bunch monitor



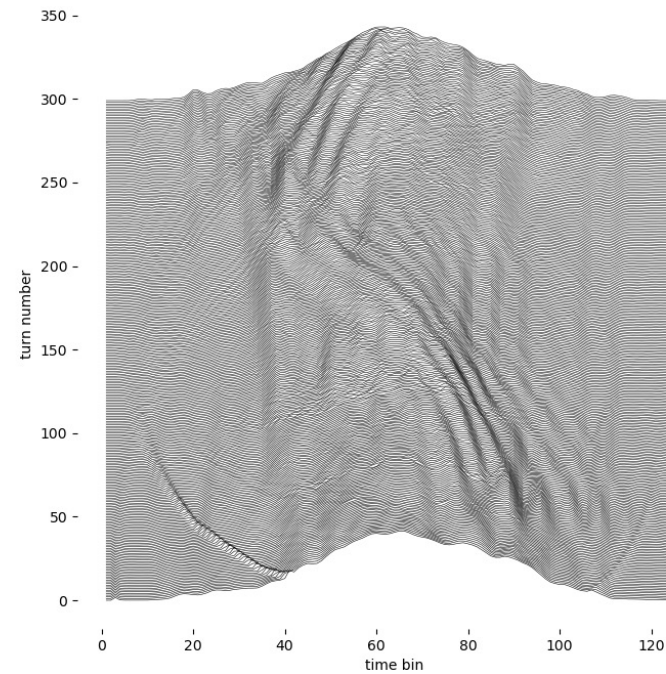
BPM (EH1 + EH2)

Turns 9000 – 9300 (when the synchronous phase is zero)  
Assuming 4kV, the synchrotron period is 274 turns.

# Tomography projection



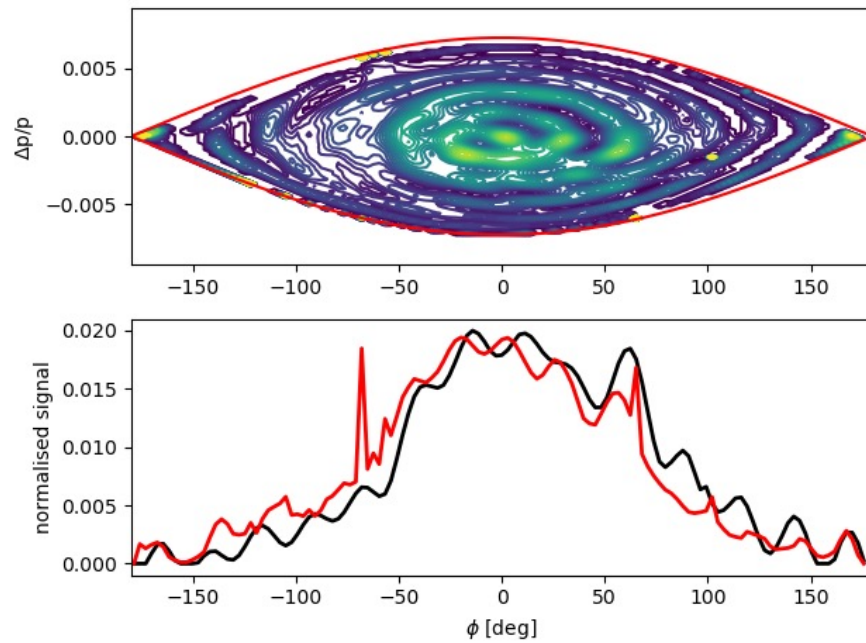
Bunch monitor



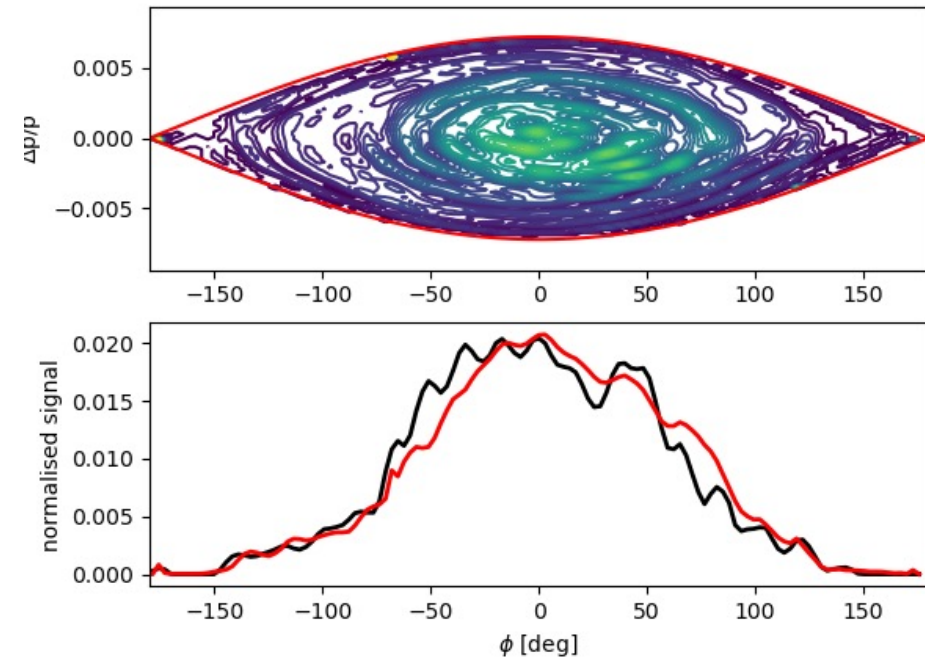
BPM (EH1 + EH2)

- Project tomographic reconstruction onto time axis on each turn.

# Reconstruction turn 1



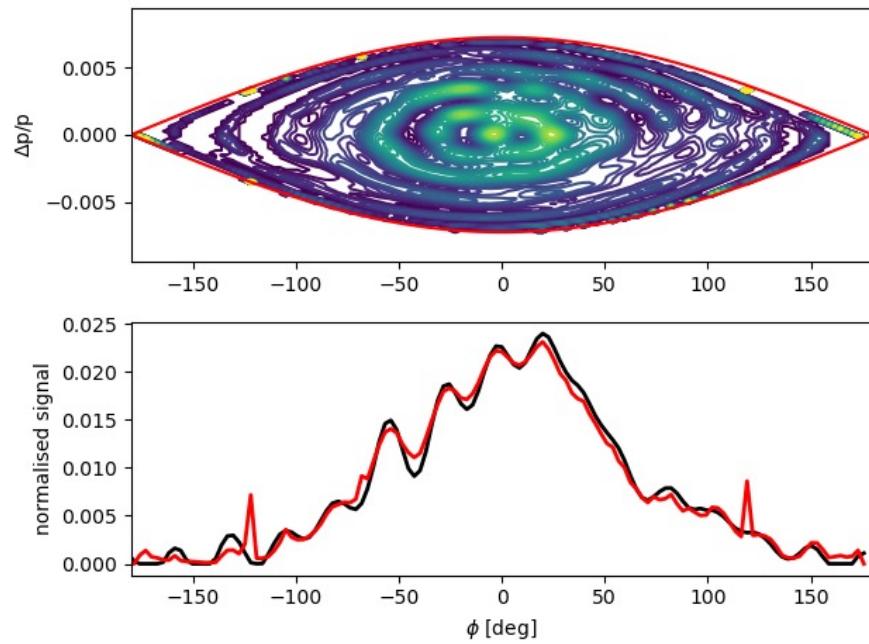
Bunch monitor



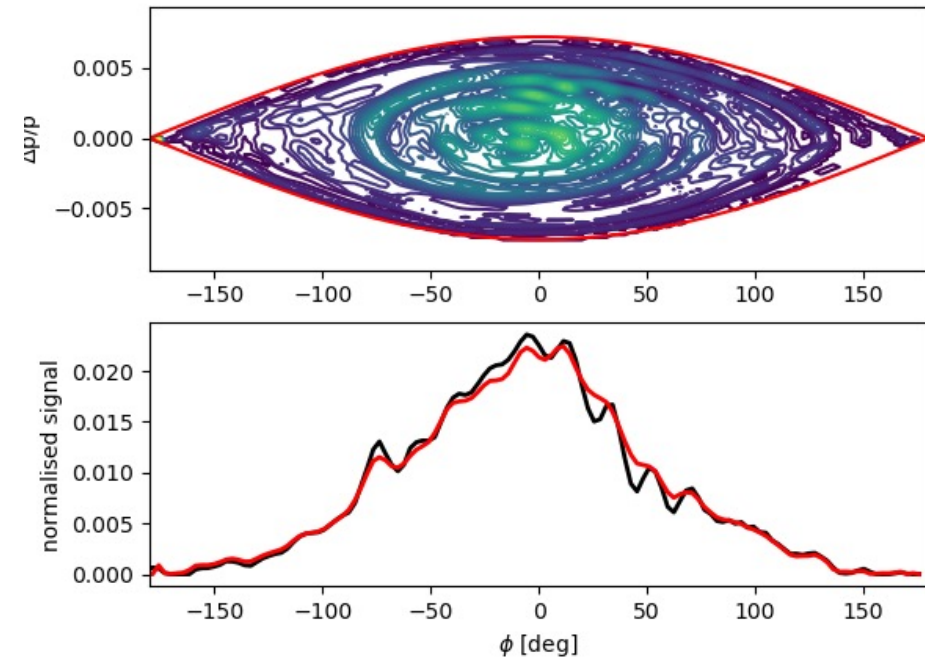
BPM (EH1 + EH2)

In lower subplot, black is input data, red is the projected reconstruction.

# Reconstruction turn 126

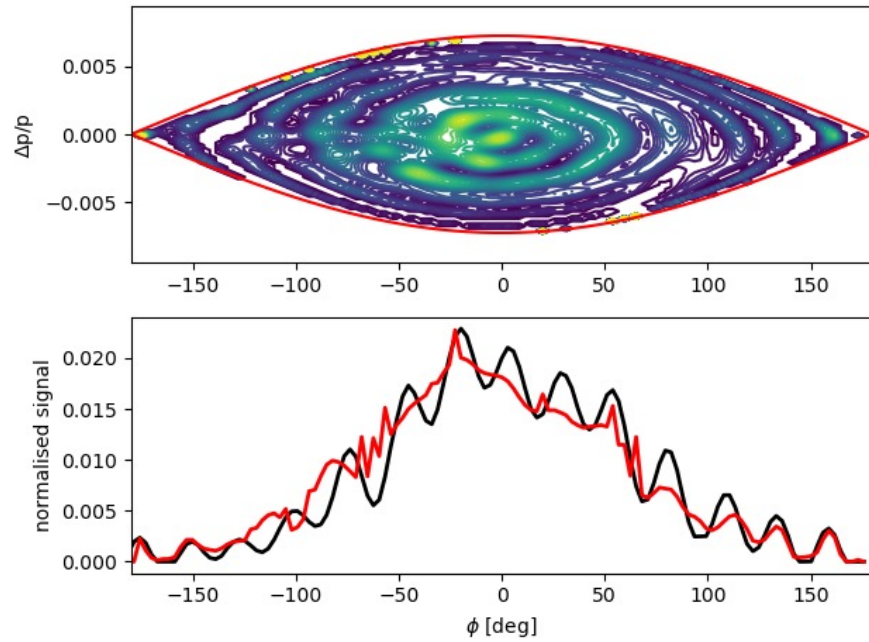


Bunch monitor

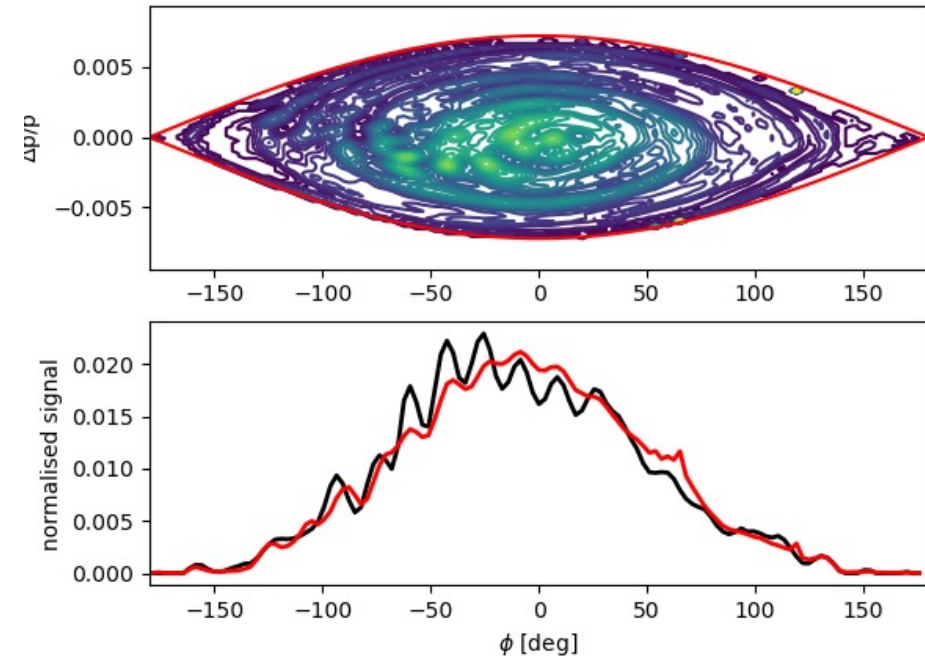


BPM (EH1 + EH2)

# Reconstruction turn 251



Bunch monitor



BPM (EH1 + EH2)