

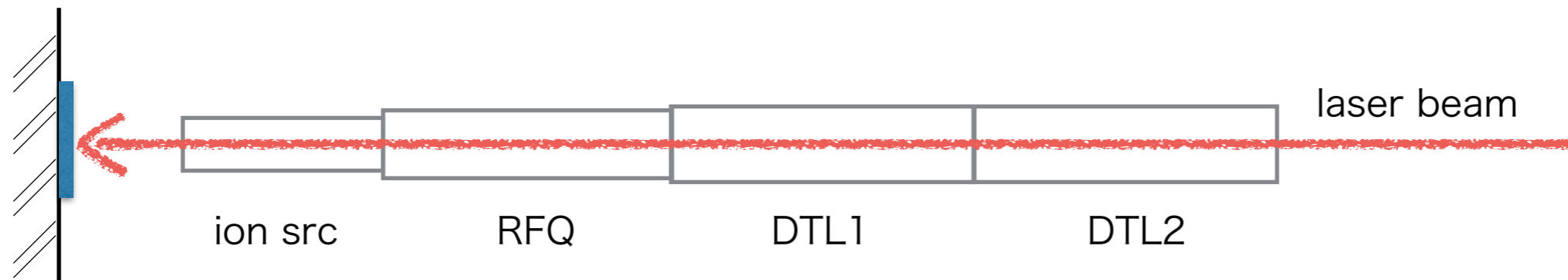
# KURRI Status

2017.06.22

y.ishi




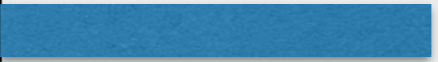

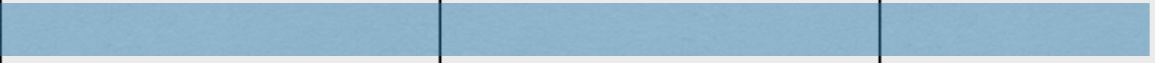

- Things have been done
  - conditioning of the ion source -> got the beam from the ion source
  - connection between LIANC and the ion source
  - alignment of the whole injector system composed of the ion source, RFQ, DTL1, DTL2

target



wall



	26June	3July	10July	17July
ion soucre		conditioning		
LINAC		RF power testing		AMP optimization w/ the Accsys engineer
BT line		preparation of beam measurement		
			beam measurement at the BT line	
Main Ring				dry run
				beam injection